



Larry Nissman | Environmental Director

26 Vreeland Avenue, Elmsford, NY

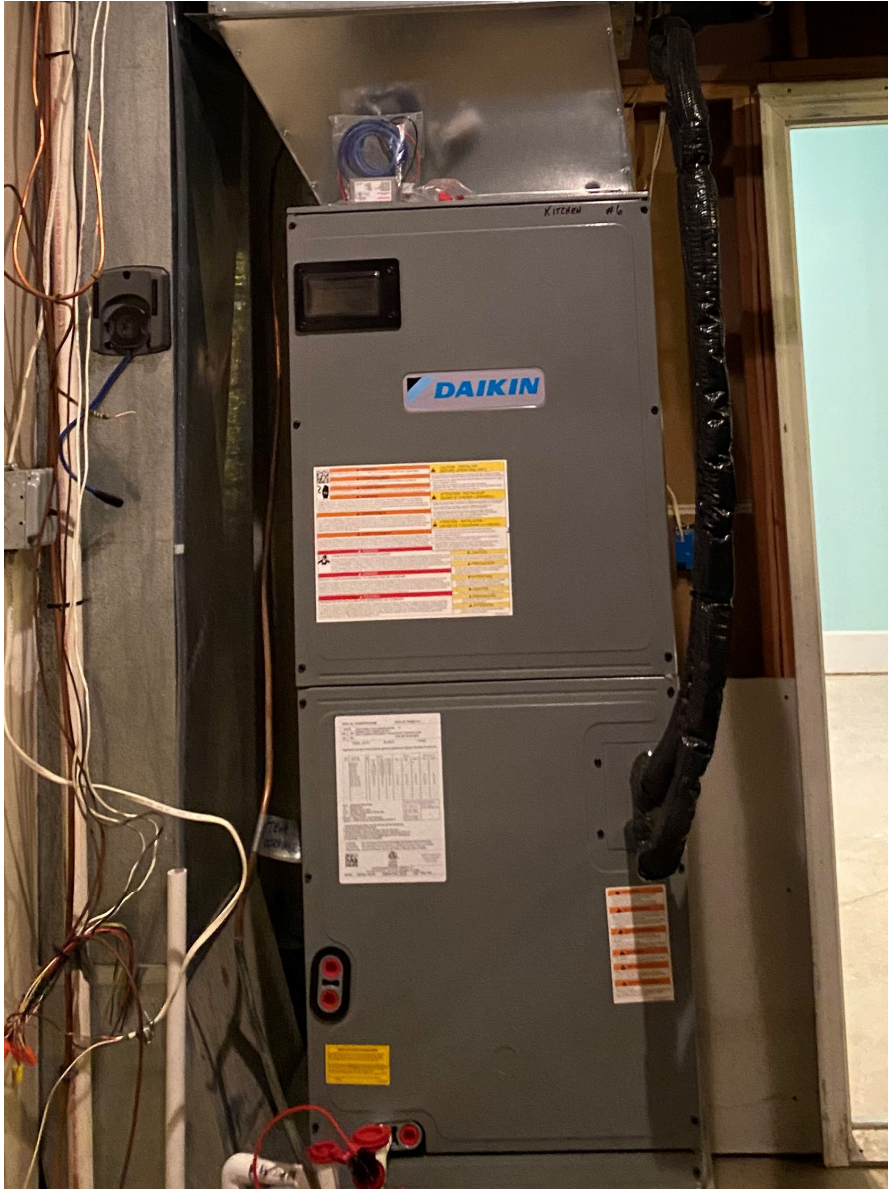




Console/Floor Mount



High Wall Mount



- Air Handler for Centrally Ducted Heat Pump System
- Full BTU capacity down to -4 degrees F
- Back up electric heat module
- Eligible for rebates









Wall mounted heat pump



Stand mounted, 12" above snow line



